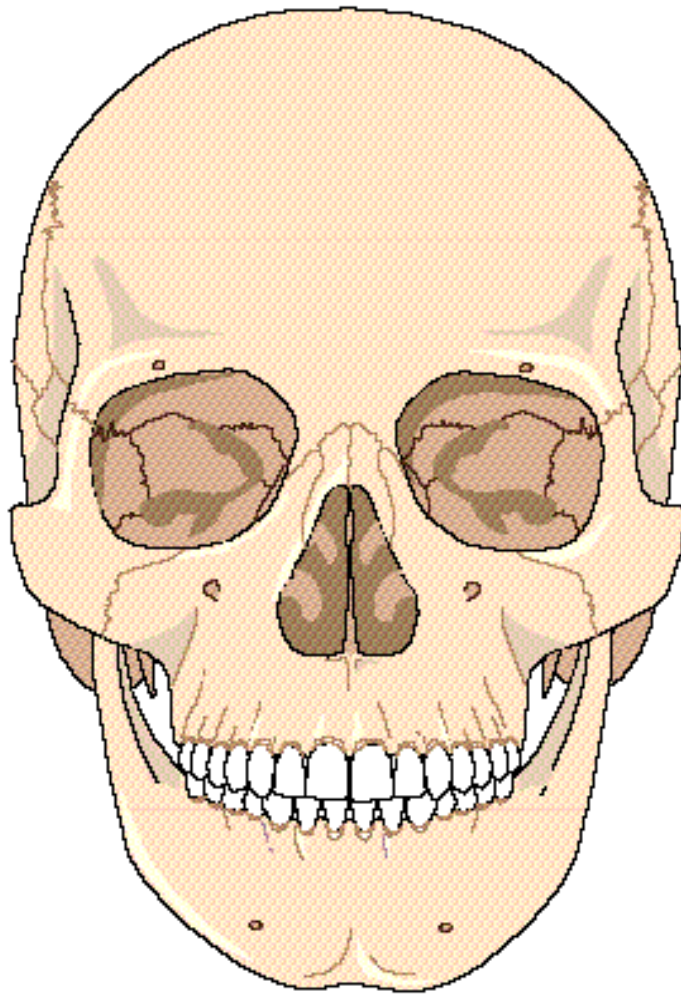


MEDICAL ANATOMY/PHYSIOLOGY (MAP)



MR. WADLEY

SPRINGVILLE HIGH SCHOOL

TEACHER: Mr. Sterling Wadley -- 785-6405 (Pleasant Grove)

TEXT: Tortora, G., and B. Derrickson. *Introduction to the Human Body*, 7th Ed., John Wiley & Sons, 2007.

INTRODUCTION:

Anatomy is the study of the human body. This class will require you to learn most of the parts of the human body. You will need to study diligently and memorize a lot of material to be successful. There are two ways you can earn credit in this class:

- 1) As a high school science class – 1 science credit toward graduation **OR**
- 2) As a high school vocational class associated with the Medical Anatomy and Physiology (MAP) program – 1 vocational credit toward graduation.

Everyone, even if you are not interested on vocational credit, must participate in the Utah State Vocational Medical Anatomy and Physiology program (MAP). **This will involve doing several assignments called “Benchmarks” and taking a final exam at the end of the year.**

THIS CLASS IS NO LONGER A CONCURRENT ENROLLMENT CLASS!

CLASS WORK:

This class will follow a lecture/lab format similar to a college course since it is a college course. You will be provided with a syllabus for taking notes. Exam questions will come directly from the text and syllabus.

Labs are a major part of the class. At least 25% of your grade each term will come from lab work.

This course deals with several “controversial” topics such as HIV infection (AIDS) and human reproduction. It will be necessary for you to get a form signed by your parents giving me permission to discuss these topics with you. More about that later..

You are expected to act like adults. If you don’t, you will be given a verbal warning. An additional warning will bring a 25 point grade cut. A third will bring another 25 point cut and a call to your parents.

ATTENDANCE

It is my intention to follow Nebo School District’s attendance policy. Attendance will count as 10% of the academic grade. Grades are figured automatically by the district computer based on attendance taken during the day. This should provide adequate incentive to be in class and on time.

Missed tests and quizzes **MUST** be taken **BEFORE** the next class period. Other missed work must be handed in within one week.

GRADE SCALE:

A	A-	B+	B	B-	C+	C	C-	D+	D	D-	F
100-93	92-87	86-83	82-80	79-77	76-73	72-70	69-67	66-63	62-57	56-50	<50

Extra Credit: May be done each term but can only raise your grade one step on the scale. Projects may include:

Research papers (individual) – 2-3 pages of original work with two references (no plagiarism).

Posters – (individual) – on a subject covered during the term.

Bulletin boards (up to 3 people) – on a subject that will be covered next term.

Class presentations (individual) – 10-15 minute presentation on some area of interest or expertise – may include a guest speaker, etc.

COURSE TOPICS/SCEDULE:

This course is divided into sixteen units representing a systemic study of the human body. Each unit will also include a list of medical terms related to that system. At the conclusion of each unit there will be a unit exam (100 points) AND a medical terminology exam (50 points). Most units will also include a lab or related activity.

Units:

Labs/Benchmarks:

Term 1:

Unit 1: Introduction to the Human Body

Unit 2: Review of Basic Physiological Chemistry

Unit 3: Cell Structure and Function

Unit 4: Tissues

Lab: Body Plan

Lab: Osmosis/Diffusion

Lab: Tissue Identification

Benchmark: Clinical Visit #1

Term 2:

Unit 5: Skeletal System

Unit 6: Muscular System

Unit 7: Nervous System

Lab: Bone Identification

Lab: Muscle Identification

Benchmark: Clinical Visit #2

Term 3:

Unit 8: Sensory System

Unit 9: Endocrine System

Unit 10 – 12: Cardiovascular/Immune Systems

Lab: Eye Dissection

Lab: Blood Typing/EKG

Benchmark: Clinical Visit #3

Term 4:

Unit 13: Urinary System

Unit 14: Digestive System

Unit 15: Respiratory System

Unit 16: Reproductive System

Lab: Respiratory Measurement

Lab: Salivary Amylase

Benchmark : Medical Ethics Paper

CTE Benchmark Final Exam